



## Panel Unit

Dedicated filtration

### Features

- Filter bypass
- Dual-stage filtration
- Industrial powder-coated paint in customizable colors
- Optional oil cooler and temperature gauge

### Benefits

- Ideal for equipment that is difficult to access or requires constant filtration
- Adaptable to your specific applications



Industry spends millions of dollars annually treating the negative effects of contamination caused by dirt and moisture, such as excess machine wear, production downtime, and repair costs.

Whether you have an application that needs regular filtration, or a maintenance location where you bring equipment to be filtered, our FlowGuard™ panel unit is a made-to-order solution that can be mounted where you need it most. Customize your panel unit at [www.descase.com/flowguard](http://www.descase.com/flowguard).

*Keeping contamination  
under control.®*

# FlowGuard™ Panel Unit Specifications

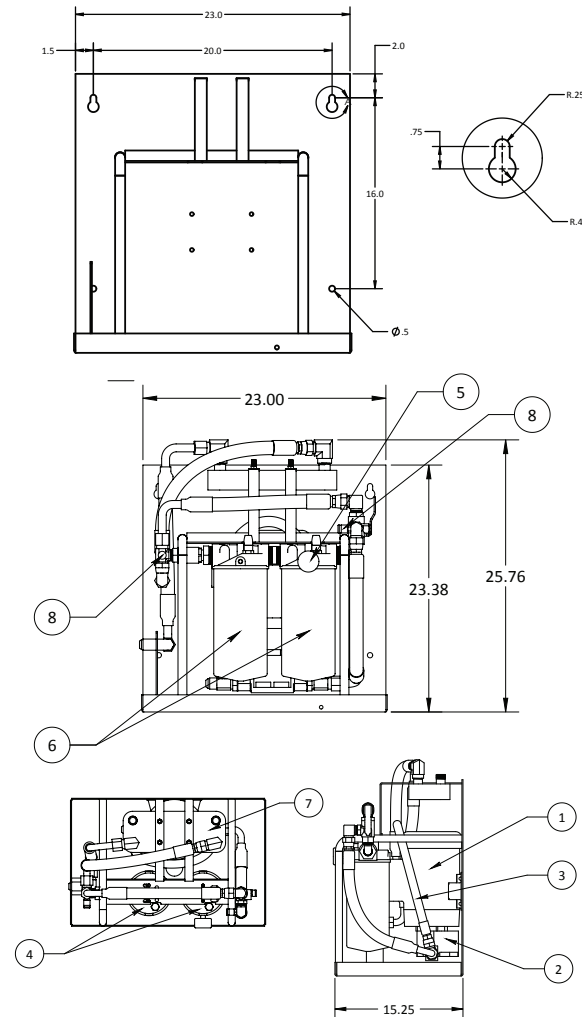
## Applications

- Decontaminating systems
- Cooling systems
- Collecting oil samples for analysis

## Performance

1. Operating Temperatures:
  - -40 °F to 150 °F (-40 °C to 66 °C) for standard unit with clear PVC hoses
  - -20°F to 212°F (-28 °C to 100 °C) for custom unit with hydraulic hoses and Viton or EPDM seals
2. Materials:
  - Frame: Carbon Steel
  - Paint: Industrial Powder Coat
  - Filter Heads: Aluminum
  - Fittings: Brass, and/or Zinc Plated Steel
  - Pumps: Aluminum/Steel
  - Hoses: Clear PVC with steel wire or hydraulic hose
3. Filter Indicators and Bypass:
  - Filter indicator pops at 22 psid (1.55 bar) as warning that filter elements need to be replaced
  - Automatic filter bypass at 25 psid (1.75 bar)
4. Weight: Approximately 100-130 lbs (will vary depending on options selected)
5. Dimensions: 15.25" L x 23" W x 25.76" H
6. Viscosity Range: ISO 10-680 (55-4000 SUS at 100°F)

Item No.	Description	Qty.
1	Motor	1
2	Gear Pump	1
3	Pump Relief - 65 psi	1
4	Filter Head	2
5	Pressure Gauge	1
6	Filter Element	2
7	Heat Exchanger	1
8	Sample Port	2



## Element Replacements

FC-AF	FC-BF	FC-CF	FC-DF	FC-JF
3um	6um	12um	25um	Water Removal

\*Other micron sizes available upon request

## How to order the FlowGuard™ Panel Unit:

Select the desired symbol (in the correct position) to construct a model code. Then contact your local distributor or call Des-Case if you don't see the options you need or would like additional assistance.

<b>FP</b>									
Box 1	Box 2	Box 3	Box 4	Box 5	Box 6	Box 7	Box 8	Box 9	

### PUMP / MOTOR COMBINATIONS \* [Box 1]

Code	Description	Code	Description
60 Hz Options		50 Hz Options	
02E	2 gpm / 1 hp electric, 115 vac, 60 hz, 1725 rpms, 13 amps	02G	1.5 gpm / 1 hp electric, 110 vac, 50 hz, 1425 rpms, 12.4 amps
05E	5 gpm / 1 hp electric, 115 vac, 60 hz, 1725 rpms, 13 amps	05G	4 gpm / 1 hp electric, 110 vac, 50 hz, 1425 rpms, 12.4 amps
10E	10 gpm / 1 hp electric, 115 vac, 60 hz, 1725 rpms, 13 amps	10G	8 gpm / 1 hp electric, 110 vac, 50 hz, 1425 rpms, 12.4 amps
02F	2 gpm / 1 hp electric, 230 vac, 60 hz, 1725 rpms, 6.5 amps	02H	1.5 gpm / 1 hp electric, 220 vac, 50 hz, 1425 rpms, 6.2 amps
05F	5 gpm / 1 hp electric, 230 vac, 60 hz, 725 rpms, 6.5 amps	05H	4 gpm / 1 hp electric, 220 vac, 50 hz, 1425 rpms, 6.2 amps
10F	10 gpm / 1 hp electric, 230 vac, 60 hz, 1725 rpms, 6.5 amps	10H	8 gpm / 1 hp electric, 220 vac, 50 hz, 1425 rpms, 6.2 amps
Pneumatic Options			
02A	2 gpm / 1.7 hp air, 0-3000 rpms	08A	8 gpm / 1.7 hp air, 0-3000 rpms

\* Performance will vary depending on operating temperature, fluid type and unit options. Call Des-Case for assistance in choosing a flow rate specific to your needs.

### FILTER A [Box 2] / FILTER B [Box 3]

Code	Description
A	3-micron Particulate Filter
B	6-micron Particulate Filter
C	12-micron Particulate Filter
D	25-micron Particulate Filter
J	Water Filter

\* Filter indicator pops at 22 psid.

### SAMPLE PORTS [Box 4]

Code	Description
0	None
1	Standard Minimes
2	High-Viscosity
3	Push Button

### SAFETY RELIEF VALVE \* [Box 5]

Code	Description
0	No Relief Valve
1	Relief Valve

\* Prevents the pump pressure from surpassing 65 psi.

### OIL COOLER [Box 6]

Code	Description
0	No Oil Cooler
1	Oil Cooler

### TEMPERATURE GAUGE [Box 7]

Code	Description
0	No Temperature Gauge
1	Temperature Gauge

### MANUAL FILTER BYPASS [Box 8]

Code	Description
0	No Bypass
1	Filter Bypass

### CUSTOM COLORS [Box 9]

Code	Description
1	Brushed Aluminum
2	Black
3	White
4	Blue
5	Red
6	Yellow

# Try All Des-Case Fluid Handling & Filtration Products

Customize your filtration system today at [www.descase.com/flowguard](http://www.descase.com/flowguard)

## Portable Filtration



## Dedicated Filtration



## Water Removal



## Lubricant Storage & Filtration



## Filter Elements



## Adapter Kits

